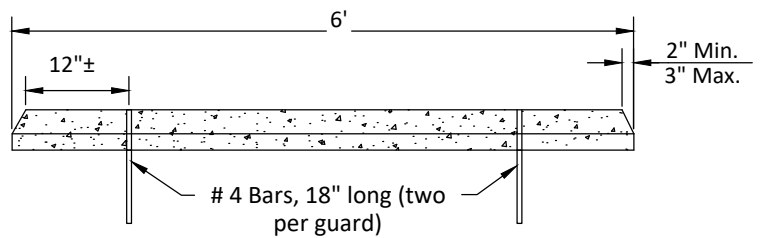
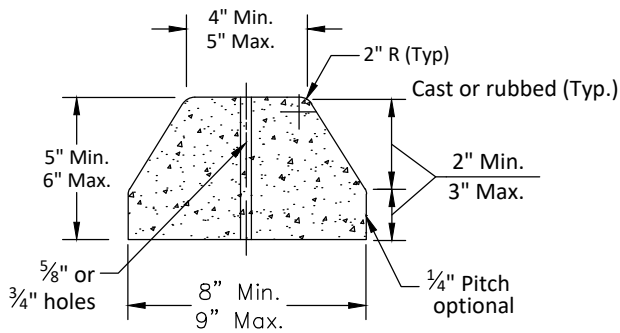
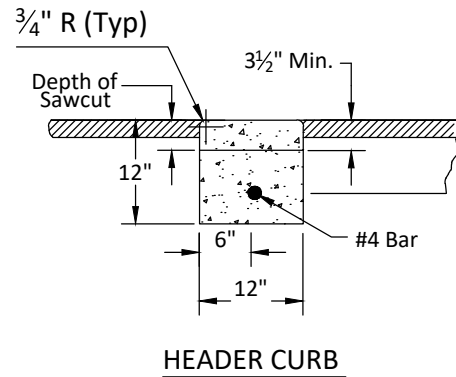
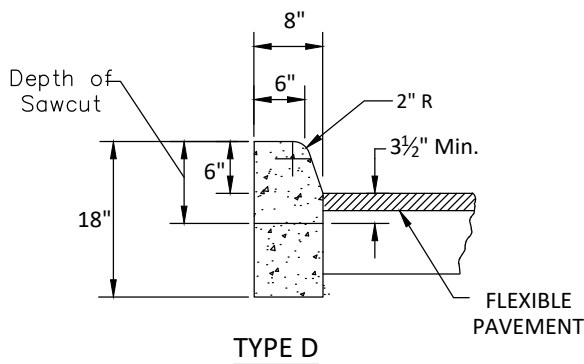


Surface on low side of pavement to be 1/4" above lip of gutter. Surface on high side of pavement to be flush with lip of curb or curb & gutter. If both edges are at same elevation, surface should be flush w/edge of pavement.



### CONCRETE BUMPER GUARD

#### Notes:

1. Ultimate strength of concrete for curbs and bumpers shall be 2,500 psi. @ 28 days
2. 1/8" - 1/4" Contraction joints in curbs shall be 3 1/2" min. depth (as measured) from top of adjacent pavement) and at 10-foot centers. No section shall be less than 4 feet.
3. When pavement is concrete, provide a 1/2" expansion joint with pre-formed joint filler and joint seal between curb and concrete pavement (1 1/2" taper on curb face not required at concrete pavement).
4. Ends of Type "B" and "D" Curb shall transition from full height to zero in 3 feet.

LATEST REVISION 2019	GENERAL CONSTRUCTION - CONCRETE CURB & GUTTER	STANDARD DETAIL
	CITY OF WEST PALM BEACH - ENGINEERING SERVICES	GC-2