

## Florida (Dahoon) Holly



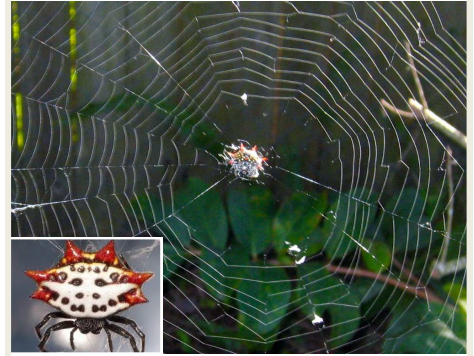
This native tree produces bright red winter berries on female plants. Though these berries are toxic to humans, they are food for birds and small mammals.

## Old World Climbing Fern



This invasive exotic will form dense mats that shade out other plants and create a fire ladder to the canopy. If seen, report location to staff.

## Spiny Orb Weaver



A relative of the spider from *Charlotte's Web*, the spiny orb weaver catches flying pests such as moths, mosquitoes and beetles in its flat, round web.

## Apple Snail Eggs



This aquatic snail only comes out of the water to lay its eggs. Apple snails are the only food source of the endangered Snail Kite.

## Saw Palmetto



A small shrub that provides shelter for the Florida burrowing owl and other birds. White tailed deer eat its fruit, which is also used for medicine.

## Banded Water Snake



This snake mimics a water moccasin in color and will flatten its head when threatened to also mimic its shape. It is 2 to 3 feet long and nonvenomous.

## Duck Potato



As the name indicates, the seeds of this plant are eaten by waterfowl and other birds. Native Americans would eat the tubers either roasted or raw.

## Pickerelweed



Prolific in wetlands, the long heart shaped leaves and air-filled stalks provide cover for fish, birds and reptiles. The purple flowers are edible.

## Yellow Rat Snake



The best tree climber of all FL snakes, this snake also burrows underground. It eats rats, lizards and frogs, and is nonvenomous.