

# Grassy Waters Preserve Activity Packet

## Everglades Animal Word Search

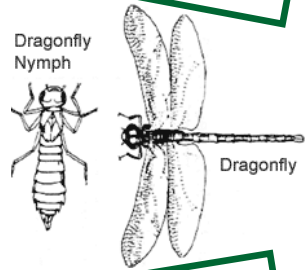
**Mammals** have fur or hair, give birth to live young, and drink milk as a baby.

**Birds** have feathers and lay hard-shelled eggs.



Green Anole

**Reptiles** are cold blooded animals that have scaly skin.



**Invertebrates** are animals that do not have a backbone. Instead, they have hard outer skin called an exoskeleton.

F E W M O S Q U I T O F I S H  
 V W J Q Q N F T D X G X B J F  
 E C R A Y F I S H I C T I H I  
 Z R G L Y C S Y Z W W T R P Z  
 D R W X L G H A Z O H G D I A  
 U A D S I M U S K R A T K M M  
 I N V E R T E B R A T E B A P  
 B G J O W N V G E W J X T M H  
 P S V E E D A L U J F P G M I  
 Q X N J P X I U H F M G S A B  
 E B D Q K T A F J H A R B L I  
 L A E B P A L L I G A T O R A  
 F S G E U Z N R N Z A Y U V N  
 S Y R L U S I G M S Q J O V B  
 I X P O E C O K I H V P F J Y

Match the Everglades animal with their correct classification.

Then use the words to complete the word search.

**Amphibians** are born with gills, so they can live underwater as babies. Adults develop lungs and can live on land.

MAMMAL

ALLIGATOR



BIRD

CRAYFISH



REPTILE

MUSKRAT



AMPHIBIAN

MOSQUITOFISH



FISH

NEWT



INVERTEBRATE

EAGLE



Red Cardinal

# Everglades Hideout

Color the picture and find the camouflaged animals.



Gopher Tortoise



Pig Frog



Pygmy Rattlesnake



Pileated Woodpecker



Red-Shouldered Hawk



Grey Squirrel



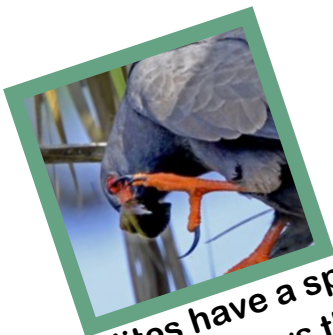
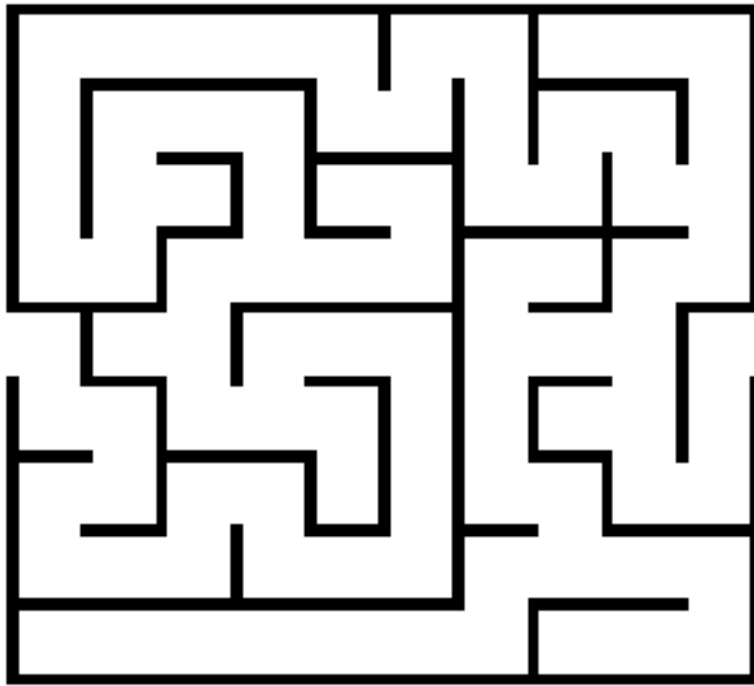
Bobcat



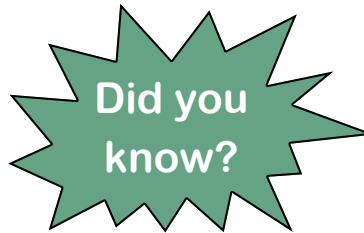
Have you seen any different animals in your backyard?

List them below!

Can you help the Snail Kite get to the Apple Snail?



Snail Kites have a special adaptation that allows them to eat Apple Snails easily. Their beaks are curved to help them get the snail out of its shell.



Apple Snails lay their eggs on grass above the water. Look for them when you visit the preserve.

Snail Kites only eat Apple Snails for breakfast, lunch, and dinner!

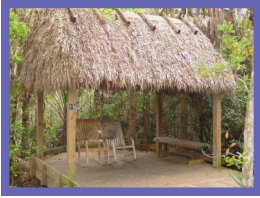
## All About Grassy Waters Preserve!

- Grassy Waters Preserve is a 15,000 acre Everglades habitat, which is the same size as about 11,500 football fields!
- The Everglades is a wetland, meaning the habitat is often covered with water.
- The Preserve is home to many animals, such as alligators, wading birds, frogs, snakes, raccoons, bobcats, and otters.
- Grassy Waters Preserve provides drinking water for the City of West Palm Beach and surrounding communities.



# Native American History

When the Native Americans lived in South Florida, they learned how to use the environment around them to help them survive.



They used Cabbage Palm fronds to make the roof of their shelter, and Cypress trees to make the frame. These structures are called chickees.

Animals, such as deer, were hunted for food. Their fur was then used to make clothing and blankets.



The Native Americans ate many different plants, such as Cocoplums. However, they knew not to eat the poisonous Florida Holly berries because of their red color. Red in the wild usually means 'warning do not eat me'.



Cocoplum



Florida Holly



Hard rocks and shells were carved into tools for hunting and cooking. Shells were also used to make jewelry.



Lemon Bacopa

Some wetland plants were used by the Native Americans for medicine. Lemon Bacopa was used for colds, and Wax Myrtle was used as bug repellent.



Wax Myrtle

Color the picture of the Native American in the canoe made of a hollowed out Cypress tree.



# Everglades Food Chain

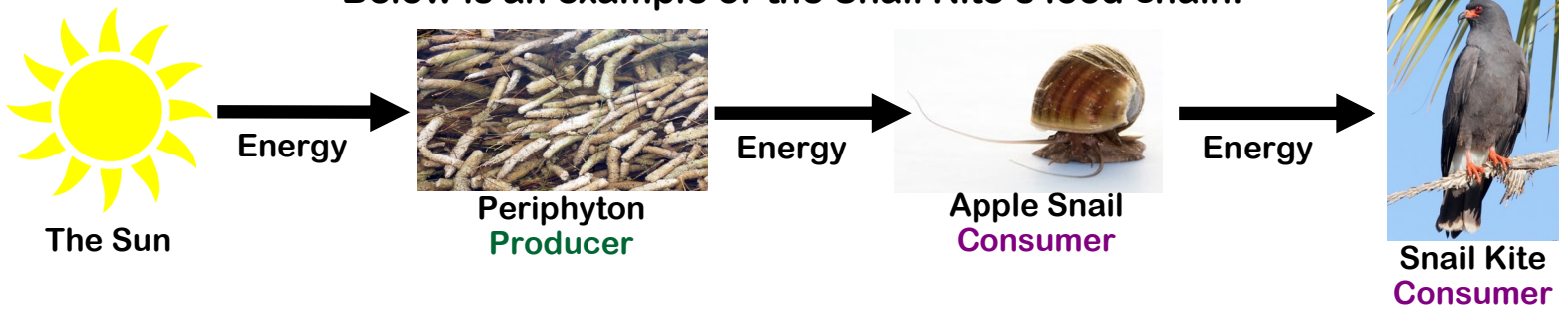
When you eat lunch you get energy from the food you eat. That energy originally came from the sun.

Plants create energy directly from the Sun through a process called photosynthesis; they are known as producers.

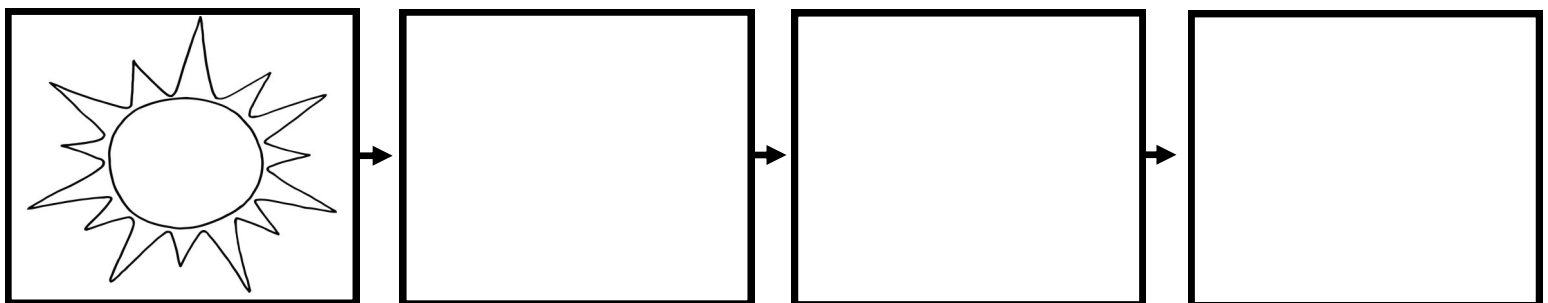
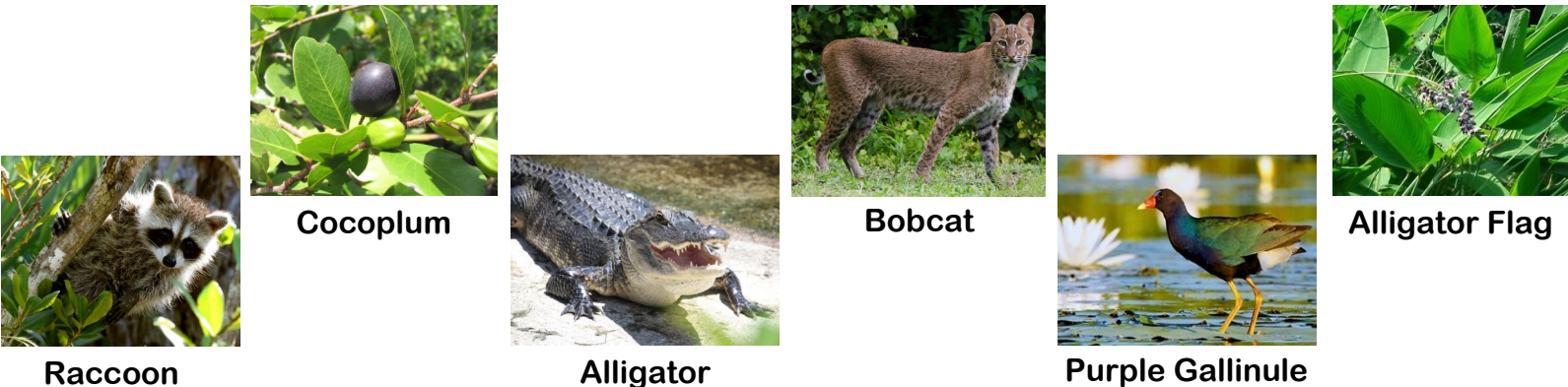
Animals, like you, cannot create energy directly from the sun. They need to get their energy by eating plants or animals. Therefore, animals are known as consumers.

To show this flow of energy we use a food chain. Food chains show us how all living things are connected by what they eat.

Below is an example of the Snail Kite's food chain.



Now it's your turn! Draw and label three of the following Everglades animals to make a food chain in the boxes below.



The Sun

Producer

Consumer

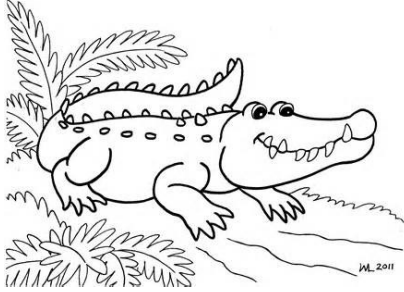
Secondary Consumer

## Want to learn more...

Explore these cool websites, videos, and books to learn more about the Everglades!

### Everglades Animals:

- National Park Service- Wildlife of the Everglades
- Youtube- Meet the Residents of Everglades National Park-National Geographic



- Youtube- Animals of the Everglades- GoTraveler (Information on animals begins at 00:52)

### Everglades Habitats:

- National Park Service- Everglades Habitats
- Marsh Habitat (seen at Grassy Waters Preserve):
  - National Park Service- Sawgrass Prairie



### Water Conservation:



- EPA- Water Sense for Kids
- Water Use It Wisely- 100 Ways to Conserve Water for Kids

### Books about the Everglades and its Animals:

Books available to borrow from Grassy Waters Preserve Nature Center or a Palm Beach County Library branch.

- *“The American Jungle”* By Harvey E. Oyer III
- *“The Last Calusa”* By Harvey E. Oyer III
- *“Everglades”* By Jean Craighead George
- *“One Night in the Everglades”* By Laurel Larsen Ph.D
- *“Everglades Forever”* By Trish Marx
- *“The ABC’s of Grassy Waters Preserve”* By Donna Van Horn

